



Anopheles stephensi Liston (Cellia)

Strain Name: STE2, MRA-128

Place of Origin: Delhi, India

Colonization date: unknown

Established by: NMRI

Deposited by: Dr. William Collins

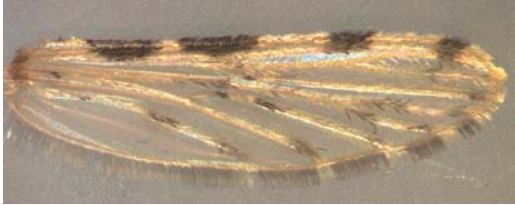
Genotype: no information

Phenotype: no information

Karyotype: undefined

Insecticide Resistance: none

Adult Morphological Traits



Morphological characteristics of *An. stephensi* adults.

Authentication Methods used to confirm stock identity

1. Examined adults microscopically for morphological characters: all individuals had standard features of *An. stephensi*.

References referring to this stock:

Lobo, N. F., J. R. Clayton, et al. (2006). "High efficiency germ-line transformation of mosquitoes." *Nature Protocols* 1(3): 1312-1317.

Wilkins, E. E., S. C. Smith, et al. (2007). "Rubidium marking of *Anopheles* mosquitoes detectable by field-capable X-ray spectrometry." *Med Vet Entomol* 21(2): 196-203.